

NYMPHEUS LUMINANSIS

The Water Lilies of Light

A museum exhibition by Laurence Saunois
A tribute to Claude Monet
Produced by David J. Wagner, LLC

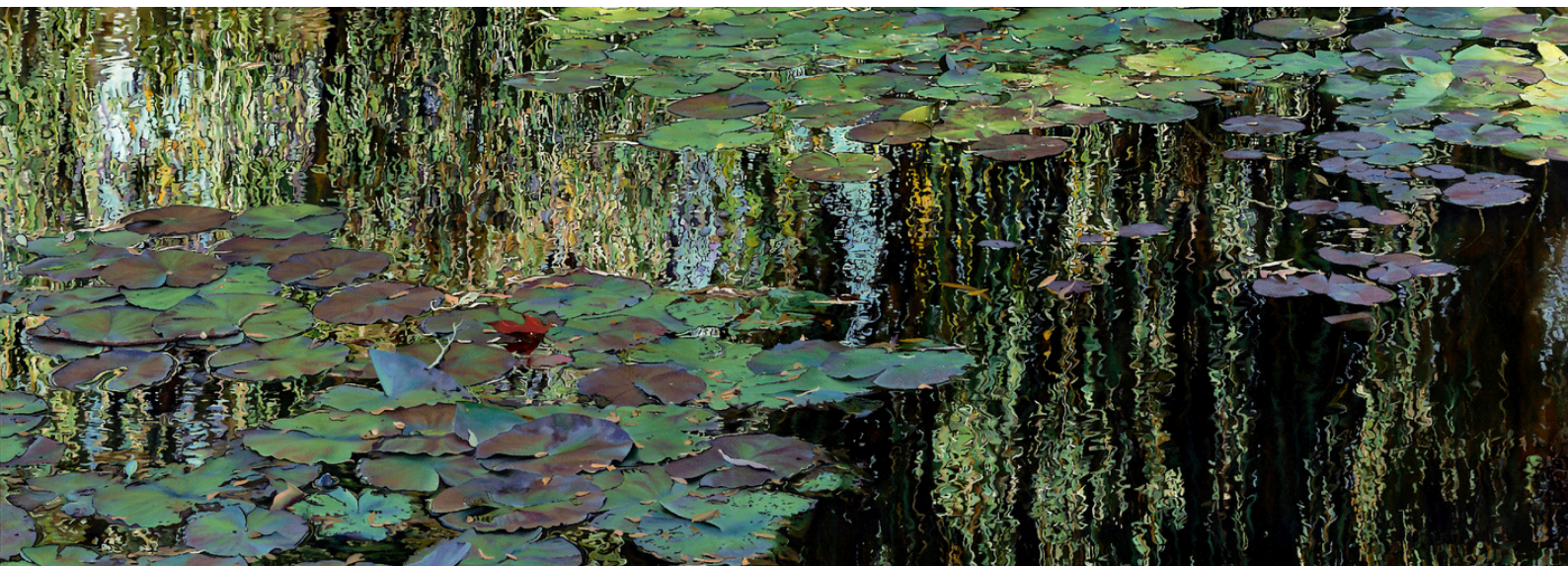
French Premiere, Palais Balene, Figeac, France
American Premiere, Slater Memorial Museum, Norwich Free Academy, CT
Grand Finale following six-stop American Tour Pending in 2028
at The Embassy of France, Washington, D.C.



Laurence Saunois celebrates the water lilies of Giverny, a theme that inspired Claude Monet. This series of ten paintings invites the viewer to an immersive and poetic visual experience, where light and color become the true protagonists.

“What I do will be the impression of what I feel.” Claude Monet“

That's exactly how I felt when I visited the water garden... I was overwhelmed by what I saw.” Laurence Saunois



INDEX

A project, an adventure	1
Genesis, light, and creation	2 - 3
Franco-American Tour	4
The Artist	5
Press Images	6
Practical Information	7
Partners	8
Contact	9

A PROJECT, AN ADVENTURE

*10 years,
over 10,000 hours of creativity,
the project of a lifetime!*

2017

Visit to Claude Monet's Water Garden in Giverny

Birth of the "Nymphéus Luminansis" Project, a creation about light and color

Spring 2018

Start of the first large-format painting in a series of 10 paintings.

October 2022

After four years and nearly 1,000 hours of creativity, the first painting is complete.

Fall 2022 to Fall 2025

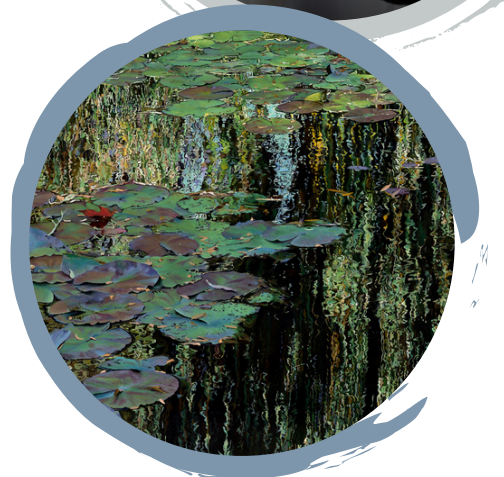
Creation of the 9 other paintings.

November 21 to 30, 2025

French premiere: Exhibition in Figeac

2026 - 2028

American Premiere and Museum Tour - United States



PRESS KIT

NYMPHEUS LUMINANSIS
EXHIBITION

NYMPHEUS LUMINANSIS: GENESIS, LIGHT, AND CREATION

NYMPHEUS LUMINANSIS is a series of ten square and double-square paintings based on a theme dear to Monet:
The water lilies of Giverny.

Nymphæus Luminansis:

an artistic neologism created by Laurence Saunois.

- ***Nymphæus:*** from the Latin *nymphaea*, the water lily, the flower emblematic of Monet's ponds.
- ***Luminansis:*** formed from the word *luminance*, a scientific concept that refers to the visual perception of light emitted or reflected by a surface, and the suffix *-sis*, commonly used in scientific vocabulary to designate an action, process, or state, giving the term a technical and timeless dimension.

The combination of these two terms defines an original neologism by Laurence Saunois, who has created a pictorial cycle devoted to light as a true artistic medium.

The origins of Giverny

It was in Giverny, while walking around the water garden designed by Claude Monet, that the idea for Nymphæus Luminansis, the Water Lilies of Light, was born. As she walked along the paths, Laurence Saunois was deeply moved by the intensity and subtlety of the light on the water lilies, willow trees, and famous Japanese bridge. It was a moment of revelation for her: she wanted to capture not only the shapes and colors, but also the very vibration of the light and the emotion it evoked. The artist does not seek to reproduce Monet's famous paintings, but to continue the dialogue with his legacy, imbuing it with her own sensibility and contemporary perception of nature.

"I want viewers who look at my work to feel as if they have been transported to Claude Monet's garden, whether they have visited it before or are thousands of miles away, and to feel a little of what I felt," says Laurence Saunois.

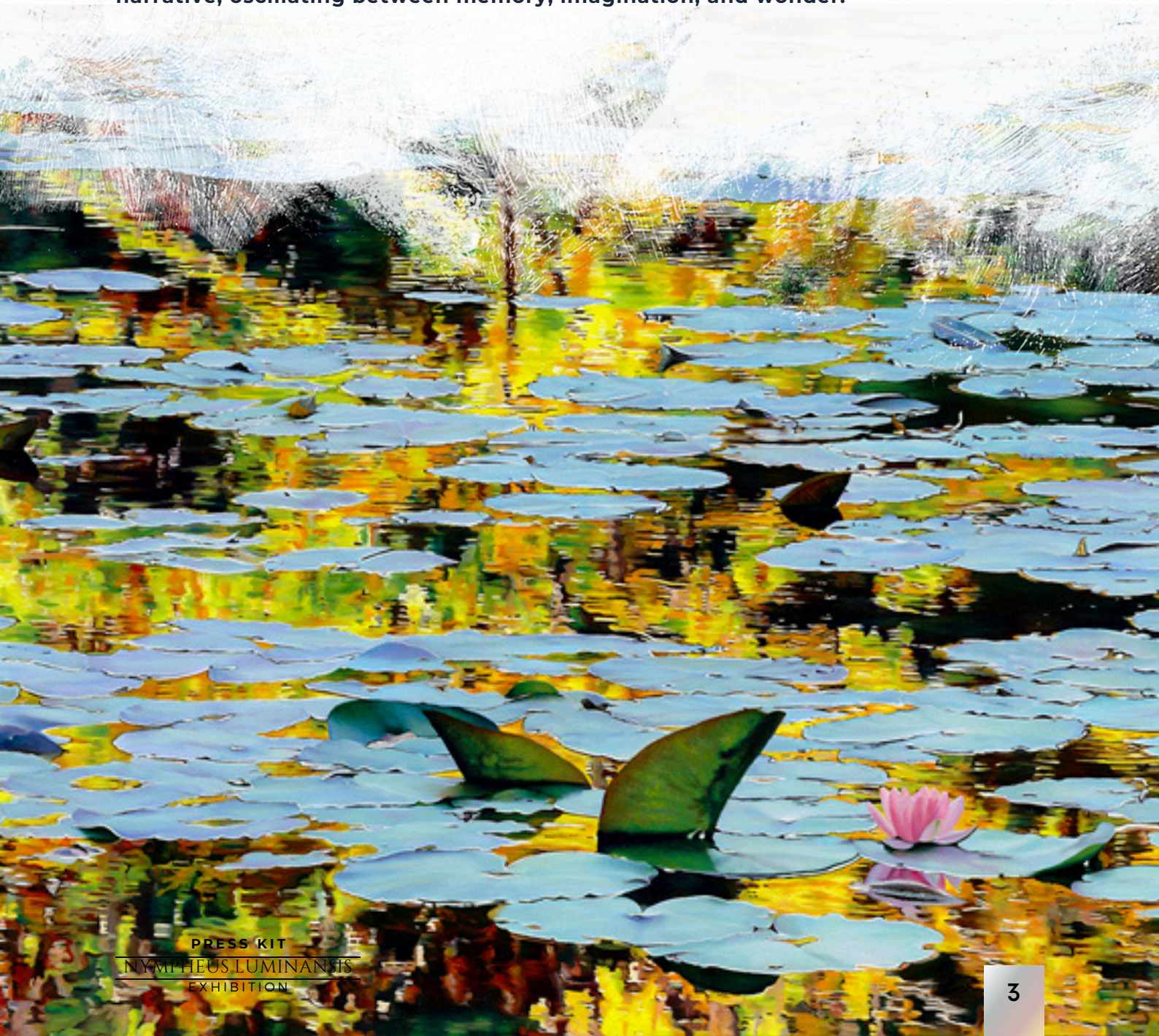
Real-impressionism, a pictorial sensation

The project was developed over a period of eight years, requiring more than 10,000 hours of work, with each canvas becoming the result of meticulous research, precise composition, and constant experimentation with light on color. Laurence Saunois thus developed what she calls "real-impressionism": when figurative precision meets an impressionistic sensation. Reflections, transparencies, and vibrations are transformed into a pictorial language, offering the viewer a visual, sensory, and emotional experience. The artist has used oils rich in pigment, handcrafted by a master French colorist, to intensify the luminosity and depth of each canvas.

Pareidolia: an invitation to develop your imagination

Each painting invites the viewer to make their own personal and intimate interpretation. Beyond the representation of water lilies and the pond at Giverny, some paintings reveal a more secret dimension: imaginary shapes and characters slip into the reflections and plays of light. This phenomenon of pareidolia transforms contemplation into a unique experience, where each person can perceive and feel different images according to their own sensibility. The work then becomes an emotional mirror, a space for dialogue between the painting, the light, and the viewer.

By combining pictorial rigor, impressionist sensitivity, and imagination, Nymphes Luminansis goes beyond a simple representation of Monet's garden. Each canvas is a contemporary reinterpretation, a living tribute that explores the fragile beauty of nature, the ephemeral nature of light, and art's ability to create an intimate connection with the viewer. The exhibition thus offers a poetic, sensory, and emotional journey, where the viewer becomes a participant in the pictorial narrative, oscillating between memory, imagination, and wonder.



AMERICAN TOUR



David J. Wagner, Ph.D.,
Curator/Tour Director



The North American tour of **NYMPHEUS LUMINANSIS** by Laurence Saunois is produced by David J. Wagner, LLC, a limited liability company established in the State of Wisconsin for the primary purpose of producing and managing traveling exhibitions for presentation in museums and related artistic, cultural, and scientific institutions. For **NYMPHEUS LUMINANSIS**, David J. Wagner, Ph.D., will serve as curator and director of the exhibition. In addition, he is an author who offers lectures and book signings, and occasionally serves as a guest curator and adjunct professor at colleges and universities.



JANUARY 15 - APRIL 15, 2026
SLATER MEMORIAL GALLERY
NORWICH, CONNECTICUT

AMERICAN PREMIERE



MAY 15 - AUGUST 15, 2026
THE EVELYN BURROW MUSEUM
ALABAMA

NATIONAL TOUR



SEPTEMBER 12, 2026 - JANUARY 3, 2027
HISTORIC CITY HALL ARTS & CULTURAL CENTER - LAKE CHARLES
LOUISIANA



JANUARY 23 - APRIL 24, 2027
PEARL FINCHER MUSEUM OF FINE ARTS - HOUSTON,
TEXAS
Guest appearance by the Artist including a gallery walk for the public opening
January 23, 2027



MAY 13 TO OCTOBER 2, 2027
SAN ANGELO MUSEUM OF FINE ARTS—SAN ANGELO,
TEXAS



OCTOBER 22 TO DECEMBER 19, 2027
DANE G. HANSEN MUSEUM
KANSAS



JANUARY 15 - MARCH 15, 2028
LA MAISON FRANÇAISE EMBASSY OF FRANCE (PENDING)
4101 RESERVOIR ROAD, NW,
WASHINGTON, DC

PRESS KIT

NYMPHEUS LUMINANSIS
EXHIBITION

THE ARTIST

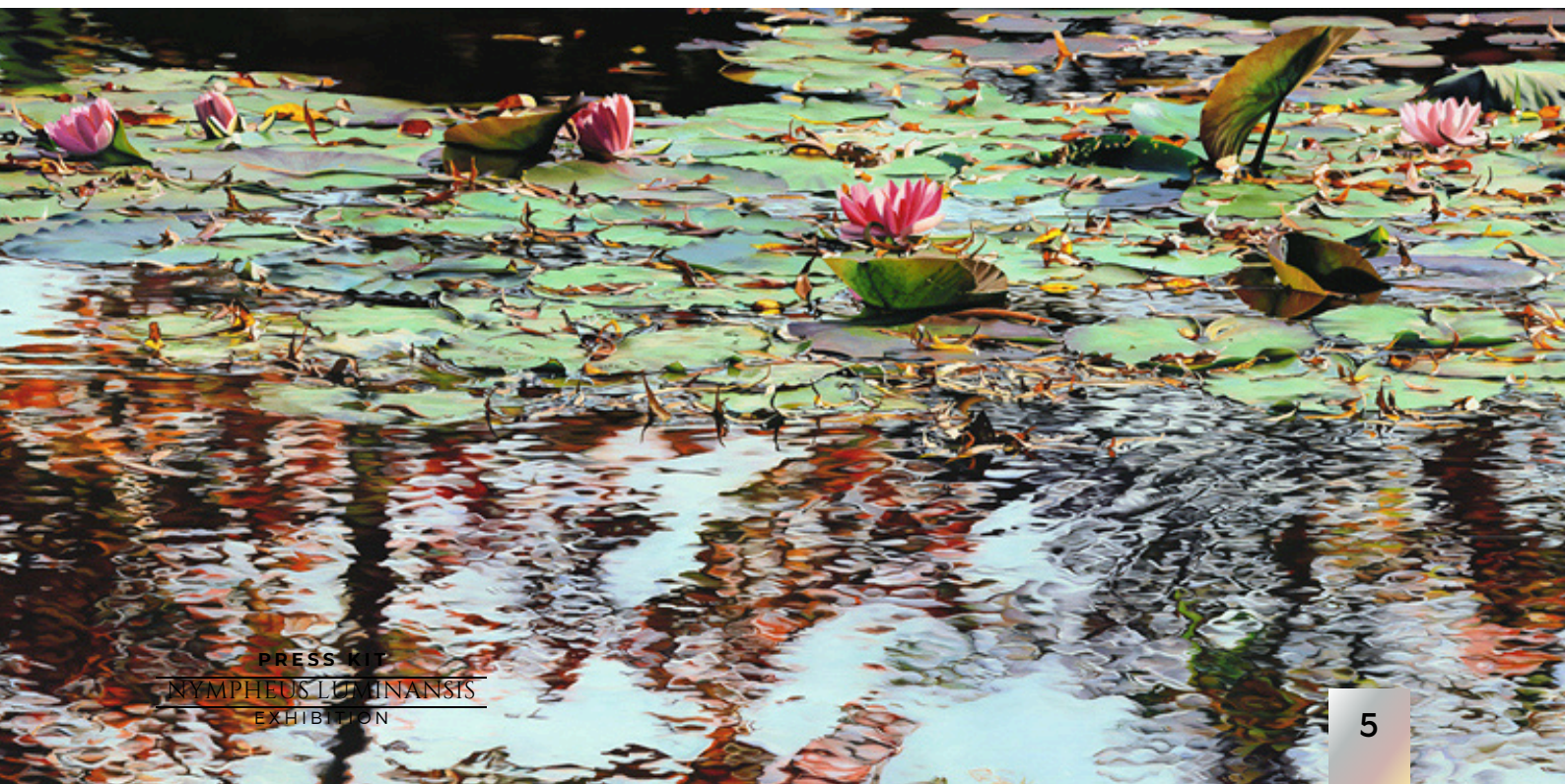
Laurence Saunois - An artist's life, between silence, light, and rebirth

Born in 1966 in the Paris region, Laurence Saunois has always drawn. At 17, her talent was recognized: her art portfolio was accepted by the Beaux-Arts in Paris. But fate intervened: administrative refusal. She was deemed too young. This rejection marked a turning point. For ten long years, she gave up drawing. A deliberate, profound silence. Then, one Christmas Day, a simple gift changed everything: a box of oil paints, a canvas, brushes. It was a revelation. At the age of 28, she discovered color, texture, and the pleasure of painting. This moment marked the rebirth of her artistic vocation.

In 1997, she left everything behind: Paris, the security of a responsible job, the city. She headed for Figeac, in the Lot region. A region of light, silence, stone, and history. There, she restored her grandfather's house and created a 6,000 m² garden with her own hands, a haven of peace and creativity. There, surrounded by nature, she painted, explored, and invented.

In 2007, she made a radical decision: to turn her passion into her full-time profession. Connected to the world through the Internet, she discovered the Society of Animal Artists, a prestigious American organization dedicated to animal art. She was accepted. The path was set.

Three years later, in 2010, her work was recognized: the BBC named her International Artist of the Year in its annual competition dedicated to animal art. Since then, Laurence Saunois has exhibited in Europe and the United States, participating in numerous prestigious exhibitions and receiving various awards that recognize both her technical mastery and the emotional power of her works. The distinctions keep coming. Among them is a prestigious title: Associate Living Master, awarded by the Art Renewal Center, the world's largest figurative art organization.



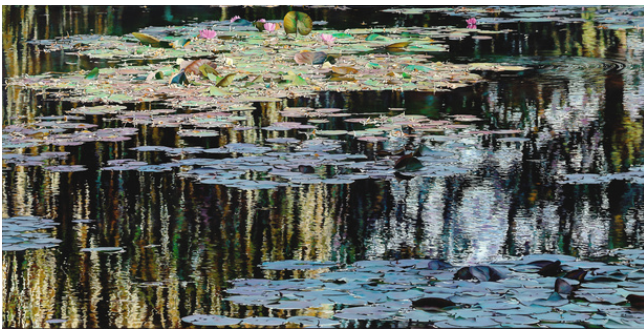
HD VISUALS



Description: Official portrait of the artist
Photo credit: © Laurence Saunois



Description: Laurence Saunois in her studio
Photo credit: © Laurence Saunois



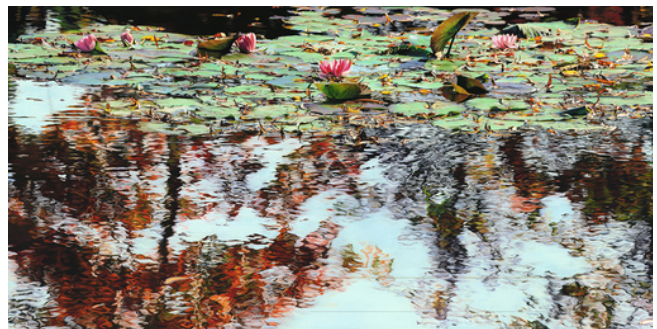
Title : Nymphes Luminans, Dance of Light
Technique: Oil on canvas
Dimensions: 1 meter x 2 meters
Photo credit: © Laurence Saunois



Title : Nymphes Luminans, Light is Gold
Technique: Oil on canvas
Dimensions: 1 meter x 2 meters
Photo credit: © Laurence Saunois



Title : Nymphes Luminans, The Path of Light
Technique: Oil on canvas
Dimensions: 1 meter x 2 meters
Photo credit: © Laurence Saunois



Title : Nymphes Luminans, Palpitating Light
Technique: Oil on canvas
Dimensions: 1 meter x 2 meters
Photo credit: © Laurence Saunois

PRACTICAL INFORMATION

FRENCH PREMIERE



Dates: November 22 to 30, 2025

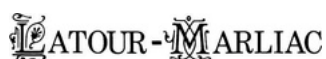
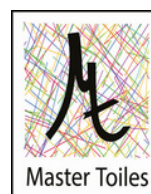
Location: Palais Balène - 46100 FIGEAC

Opening reception: Friday, November 21 at 6:00 p.m.
in the presence of the artist

Opening hours: 10:00 a.m. to 7:00 p.m.

Admission: Free

PARTNERS



PRESS KIT

NYMPHEUS LUMINANSIS
EXHIBITION

THE TOWN OF FIGEAC, A TOWN OF ART AND HISTORY



The beauty of its medieval architecture defines Figeac's identity. The medieval merchants' houses, still visible today, reflect their activity and the wealth of their occupants. The ground floors open onto arcades for shops, while the upper floors house comfortable living quarters. The ornaments, paintings, and sculptures follow the styles of the time, creating a unique architectural landscape.

Figeac is the birthplace of Jean-François Champollion, the decipherer of hieroglyphics and founder of Egyptology. His intellectual and cultural legacy, its authentic and lively atmosphere, blending different eras and styles, are major assets for the town and offer a quality of life that is appreciated by its inhabitants.

In short, Figeac is much more than just a historic town. It is a place where the past and the present meet harmoniously, offering its residents and visitors a unique experience.

CHAMPOLLION MUSEUM, THE WRITINGS OF THE WORLD



The museum, located in Figeac, has a fascinating collection that traces the evolution of writing across various cultures around the world.

In 1986, the municipality of Figeac undertook the restoration of the birthplace of Jean-François Champollion, the famous decipherer of hieroglyphics. Inaugurated in December 1986 by President François Mitterrand, the first Champollion Museum is a tribute to this eminent figure whose tenacity and intuition led to the revolutionary revelation that hieroglyphics were based on a complex system combining figurative, symbolic, and phonetic signs. This museum illustrates the harmony between tradition and modernity with its dual-facade architecture: one medieval stone facade and the other copper and glass, decorated with various writings from around the world.

The museum's exhibitions trace the fascinating journey of writing. Objects engraved with brushes, reeds, or pens transport us from Mexico to China, via Egypt and the Near East. This history, which began 5,300 years ago, invites us to explore the many dimensions of human writing.

PRESS KIT

NYMPHEUS LUMINANSIS
EXHIBITION

+123-456-7

CONTACT

For more information, please contact:

France :

Laurence SAUNOIS, Artist

Phone : +33 (0) 6 41 57 73 92

e-mail : laurencesaunois.art@gmail.com

www.laurencesaunois.net

North America :

David J. Wagner, L.L.C.

Phone : (414) 221-6878

e-mail : davidjwagnerllc@yahoo.com